



Candice S. Miller

Public Works Commissioner
Macomb County

August 13, 2021

MACOMB INTERCEPTOR DRAIN REHABILITATION PROJECT

Dear Residents & Business Owners,

We all remember the sinkhole on 15 Mile Road five years ago, when we experienced a major sewer interceptor collapse. You may have been a resident in 2004 when there was also a sinkhole on 15 Mile Road, or even remember the one in 1978. None of us ever want another sinkhole obviously. After fixing the 2016 sinkhole, my department did a comprehensive inspection of the entire system, and no surprise, it needs some rehabilitation and maintenance work. We have undertaken that work with a project that is currently under way in an area in the ITC corridor, under the transmission towers. Thus far, we have been able to contain the work to the ITC corridor, but I'm writing to you to inform you of a couple of temporary lane closures that will happen soon, as the work will require.

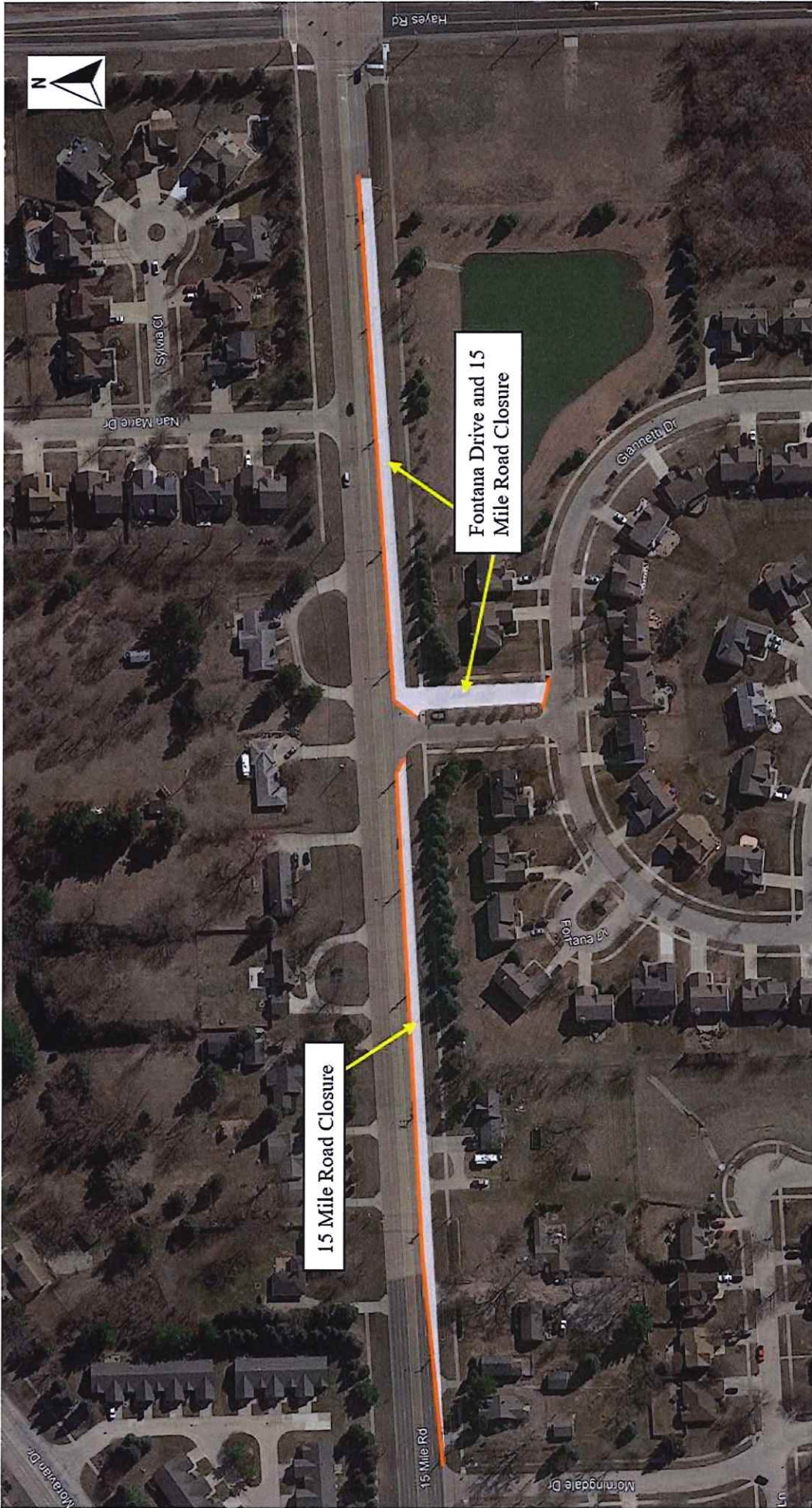
1. There will temporarily be a lane closure on the eastbound curb lane of 15 Mile Road, beginning at Morningdale Drive and ending at Fontana Drive will occur from mid-August 2021 through early fall 2022. This lane closure will allow traffic to continue along 15 Mile, but the contractors need to be able to access the manhole near Fontana, so we will need to do this.
2. There will temporarily be a lane closure on the east side (northbound lane) of the Fontana Drive entrance/exit, as well as 15 Mile from Fontana Drive to Hayes Road, which will be closed from mid-August 2021 through late spring of 2022. Two-way traffic on Fontana will be maintained by using the west side of the entrance. A pedestrian detour will be provided for foot traffic around the work area. Again, this is to allow the contractors safe access to the manholes.

We are committed to investing and maintaining our underground infrastructure for future generations, and we are also committed to ensuring we never have another infrastructure disaster along 15 Mile. We sincerely appreciate your understanding and patience during the construction period. There really isn't any other way, and we also want to make sure that local residents were notified.

There is also a map on the back of this letter to view the closures area. If you have any questions or concerns, please contact Keith Lumma with the Macomb County Public Works Office at keith.lumma@macombgov.org or 586-469-5325.

Sincerely,

Macomb County Public Works Commissioner





Candice S. Miller

Public Works Commissioner
Macomb County

August 8, 2022

MACOMB INTERCEPTOR DRAIN REHABILITATION PROJECT

Dear Residents & Business Owners,

We all remember the sinkhole that occurred on 15 Mile Road in December 2016 and the resulting road closures, detours and emergency repair.

To ensure another infrastructure disaster like that doesn't occur again along 15 Mile, the Macomb County Public Works Office continues with the ongoing, major rehabilitation that started in fall 2020 of the large interceptor sewer – formally known as the Macomb Interceptor Drain – in the area between Garfield Road and the ITC Corridor, west of Schoenherr Road. The construction and lane closures you have seen on 15 Mile for several months are part of this very important project.

Part of that work involves the lining of 8,300 linear feet of existing pipe between Hayes Road and the ITC Corridor. The majority of the work will occur underground but I'm writing to inform you of some new temporary lane closures as this phase progresses:

- 1. The partial closure of the 15 Mile/Hayes Road intersection to allow workers to access a manhole near Hayes Road on 15 Mile.**
- 2. The partial closure of 15 Mile Road will begin at Morningdale Drive (west end) and terminate near Hidden Pine Drive (east end).**
- 3. Hayes Road south of 15 Mile Road will be partially closed.**
- 4. North of 15 Mile, Hayes Road will be completely closed from 15 Mile to Moravian.**

These closures will occur from mid-August 2022 through early spring 2023.

This project is part of the continued inspection, maintenance and rehabilitation of underground infrastructure that the Macomb County Public Works Office is committed to. To that end, we sincerely appreciate your patience and understanding during this construction in your area. There really isn't any other way, but we want to make sure that local residents and businesses are notified.

Please see the map on the back of this letter to view the closures area. If you have questions or concerns, please contact Keith Lumma with the Macomb County Public Works Office at keith.lumma@macombgov.org or 586-557-4071.

Sincerely,

M

Macomb County Public Works Commissioner

