



# STORM WATER

## Macomb County Public Works Office



### 16% Water

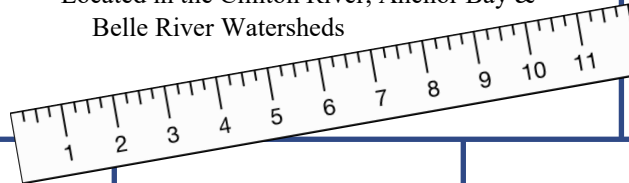
About 92 square miles of Macomb County is surface water of Lake St. Clair, the Clinton River, drains, ponds and other waterways.

### Macomb County Drains

475 total drains  
401.71 miles of open drains  
329.95 miles of enclosed (pipe) drains  
Located in the Clinton River, Anchor Bay & Belle River Watersheds

### Grants Received

15 total grants worth \$5 million secured in 2018



### Soil Erosion Control

Soil erosion permits issued: 1,262  
Soil erosion inspections: 14,022  
Value of new construction supported: \$1 million-plus

### Open

### Government

71 meetings county drain boards held in 2018 — all open to the public.

## 877-679-4337

### Pollution Hotline

Responded to 141 citizen calls about potential pollution in county drains in 2018. Hotline is staffed 24 hours per day.

### The Macomb County Public Works Office has two goals:

to improve the quality of life for our residents; and to serve as a critical component of economic development in our community. The MCPWO administers 475 county drains that prevent flooding in our communities. Some of these drains are open streams or creeks, while others are massive underground structures that carry storm water away from neighborhoods and businesses. Given our responsibility for these waterways, we are actively engaged in numerous initiatives to enhance the overall water quality in our lakes and rivers, most notably the Clinton River and Lake St. Clair. In addition, we operate 48 miles of sanitary sewer lines which transport waste from 800,000 citizens to the Great Lakes Water Authority (GLWA) Water Resource Recovery Facility (WRRF) where it is treated before being released to the Detroit River.

"Ultimately, every initiative our office engages in has one goal:



to improve water quality."

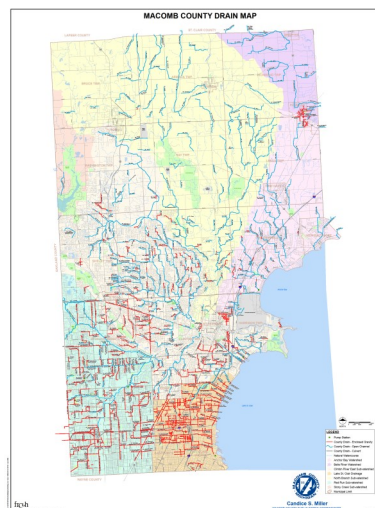
- Candice S. Miller  
Macomb County Public Works Commissioner

### Sterling Relief Drain:

The MCPWO received grants totaling \$1.8 million from the



Environmental Protection Agency and the National Fish & Wildlife Fund for a major green infrastructure project on the Sterling Relief Drain, to begin work in December 2018. As part of the project, plants that will create a "butterfly flyway" will be planted along the drain — about 5,000 trees, shrubs and flowering bushes in all. The work will be mostly completed in 2019.



### New County Drain Maps

For the first time in about 30 years, the Macomb County Public Works Office has created new maps, which show every drain and is color coded by watershed or sub-watershed. As part of the package, separate maps were created for each community in the county, highlighting drains and related features.