

Macomb County Health Department (MCHD) Students/Teachers/Staff Persons with Symptoms of COVID-19

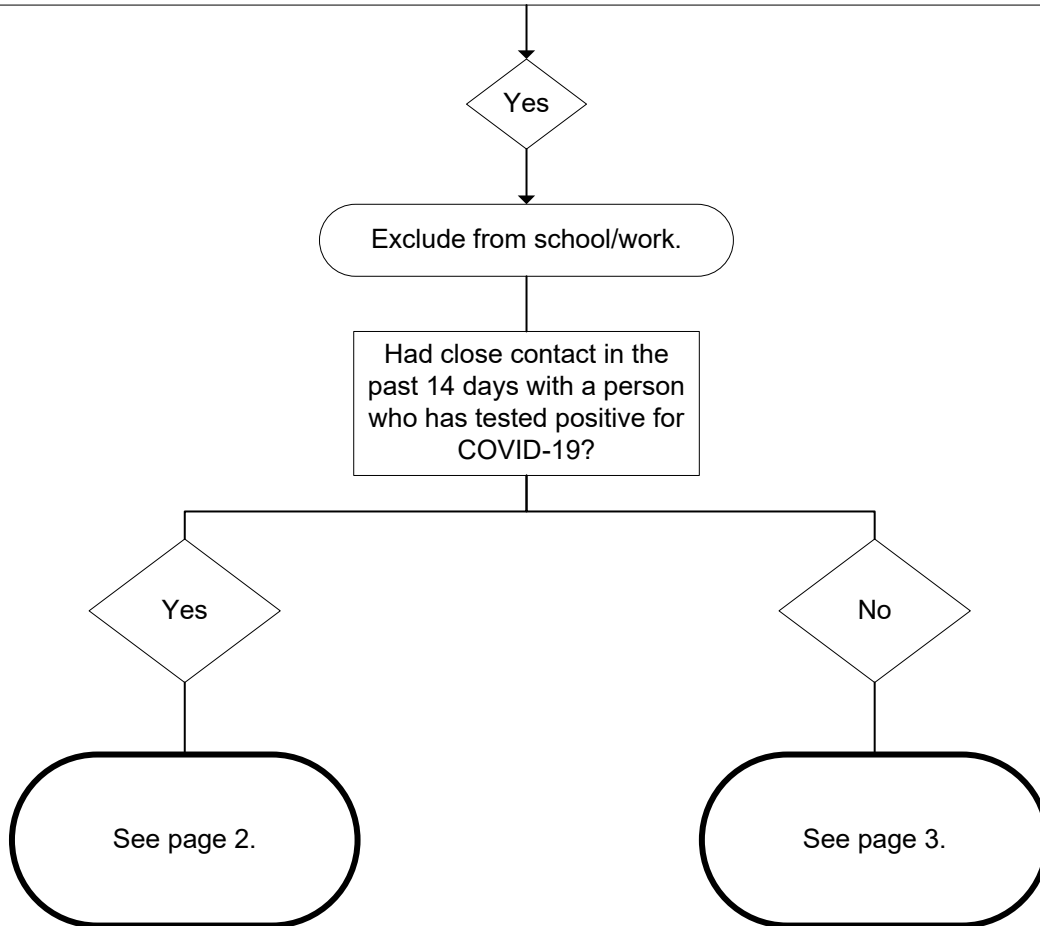
Student/Teacher/Staff person has any of the following symptoms (new/different/worse than baseline for any chronic illness):

One of the following:

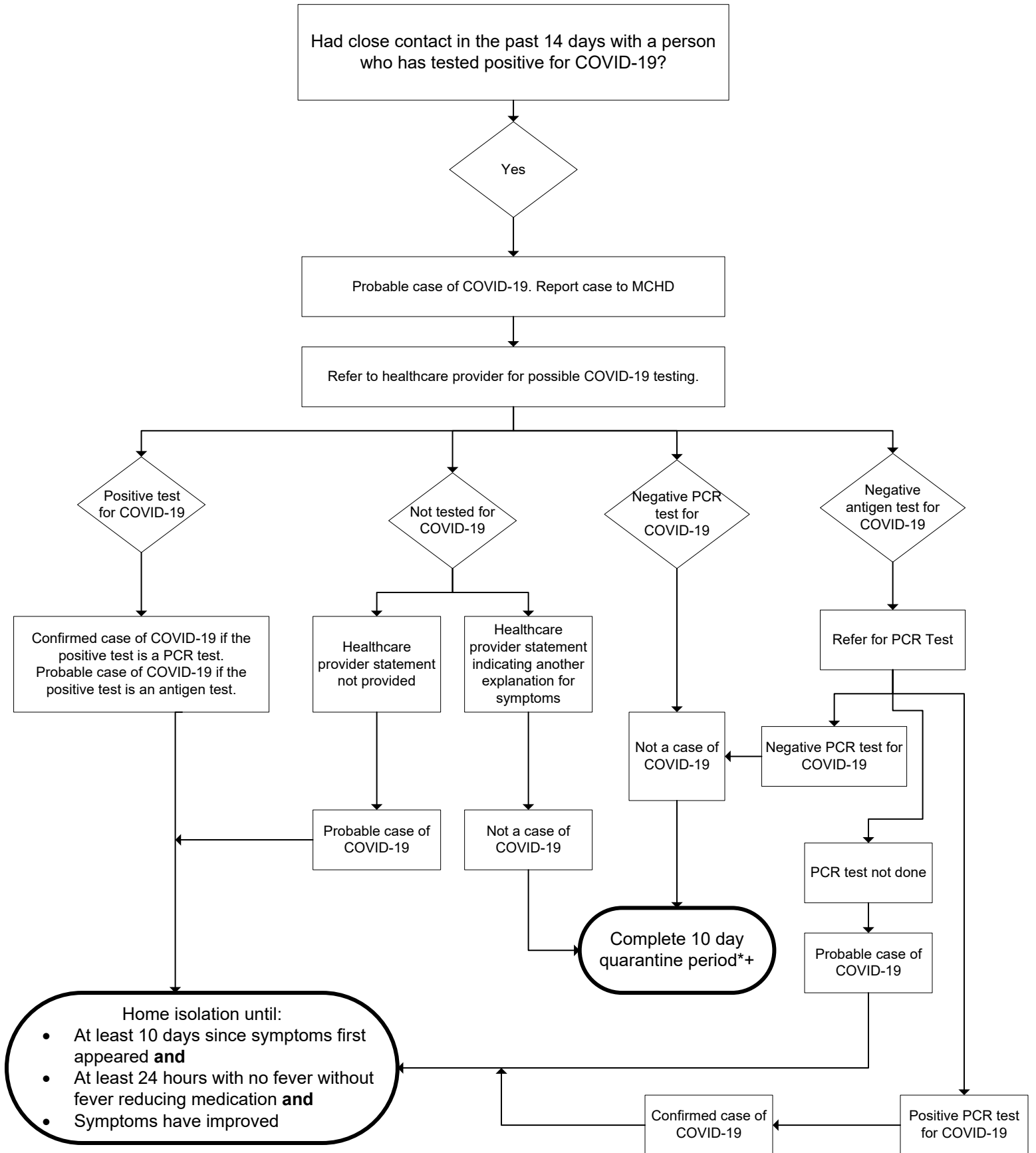
- Cough
- Shortness of breath
- Difficulty breathing
- New loss of smell
- New loss of taste

OR **Two** of the following:

- Subjective fever (felt feverish) or measured temperature 100.4 degrees Fahrenheit or higher
- Chills
- Rigors (shaking or exaggerated shivering)
- Muscle aches
- Headache
- Sore throat
- Nausea or vomiting
- Diarrhea
- Fatigue
- Congestion or runny nose

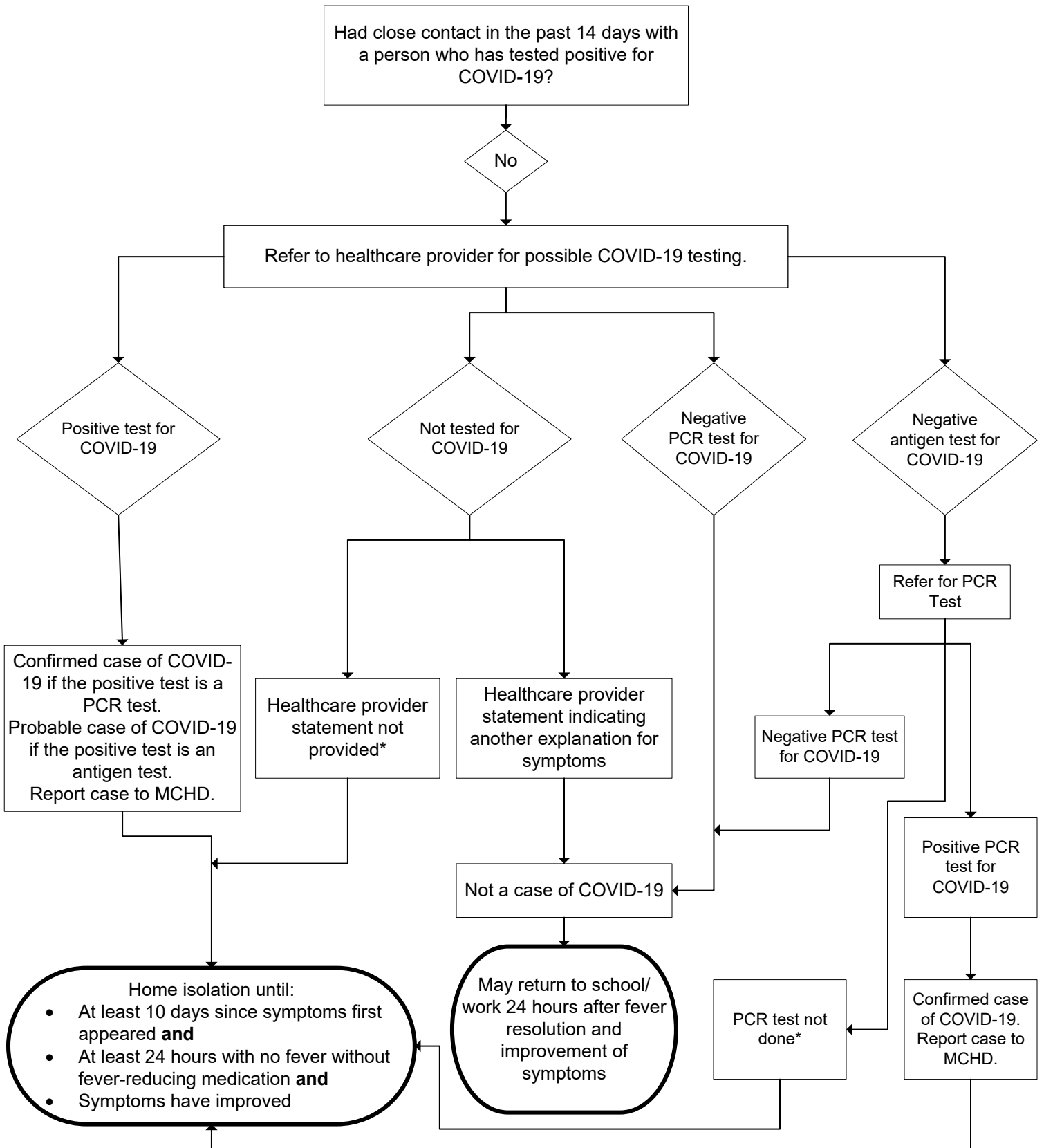


**Macomb County Health Department (MCHD)
Students/Teachers/Staff Persons with Symptoms of COVID-19**



*Quarantine is not necessary for persons diagnosed with COVID-19 in the past 3 months.
+Quarantine is not necessary for persons vaccinated against COVID-19.

**Macomb County Health Department (MCHD)
Students/Teachers/Staff Persons with Symptoms of COVID-19**



* These persons do not meet the definition of a confirmed or probable case and do not require contact tracing. However, since COVID-19 has not been sufficiently ruled out through testing, a period of isolation is still required.